

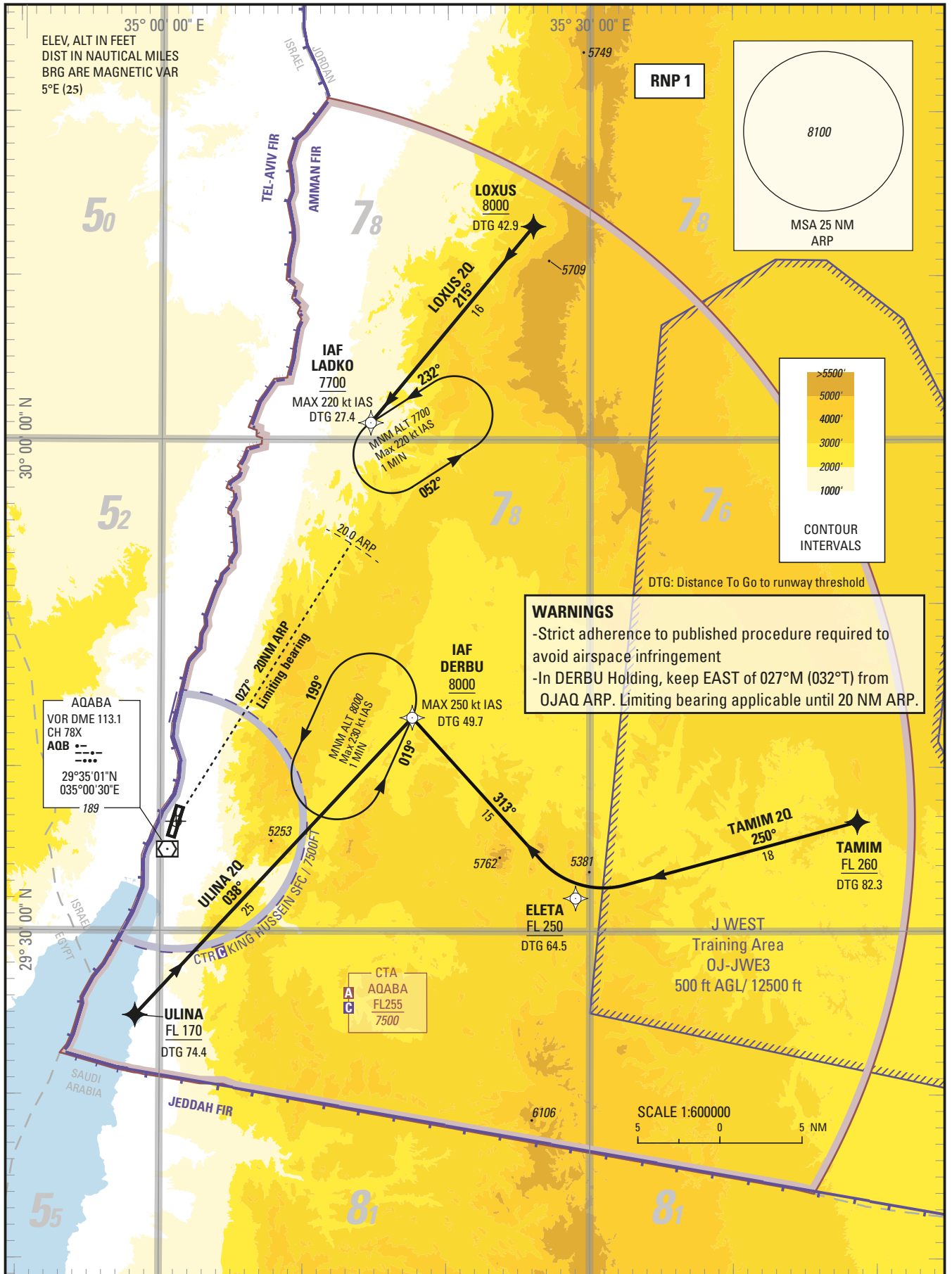
STANDARD ARRIVAL CHART —  
INSTRUMENT (STAR) — ICAO

TRANSITION LEVEL	FL 150
TRANSITION ALTITUDE	13000 ft

Aqaba Sector	132.425
King Hussein Tower	119.2

AQABA/King Hussein Intl. (OJAQ)  
RNP RWY 19

LOXUS 2Q TAMIM 2Q ULINA 2Q





### Holding instruction

Path Descriptor	Waypoint Identifier	Inbound Course °M (°T)	Leg Distance	Turn direction	Minimum Altitude (ft/FL)	Maximum Altitude (ft/FL)	Speed Limit (kt)	Magnetic Variation	Navigation Specification
Hold	LADKO	232 (237.0)	1 min	L	7700	14000	220	+5.0	RNP 1
Hold	DERBU	019 (024.0)	1 min	L	8000	14000	230	+5.0	RNP 1

### Route Description: RNP STAR RWY19

STAR LOXUS 2Q											
Serial Number	Path Descriptor	Waypoint Identifier	Fly - Over	Course °M (°T)	Magnetic Variation	Distance (NM)	Turn direction	Altitude (ft/FL)	MAX IAS (kt)	VPA/TCH (°/ft)	Navigation Accuracy (NM)
10	IF	LOXUS	-	-	-	-	-	+8000		-	RNP 1
20	TF	LADKO	-	215 (219.6)	+5.0	15.5	-	+7700	-220	-	RNP 1
STAR TAMIM 2Q											
Serial Number	Path Descriptor	Waypoint Identifier	Fly - Over	Course °M (°T)	Magnetic Variation	Distance (NM)	Turn direction	Altitude (ft/FL)	MAX IAS (kt)	VPA/TCH (°/ft)	Navigation Accuracy (NM)
10	IF	TAMIM	-	-	-	-	-	+FL260		-	RNP 1
20	TF	ELETA	-	250 (254.9)	+5.0	17.8	-	+FL250		-	RNP 1
30	TF	DERBU	-	313 (317.8)	+5.0	14.8	-	+8000	-250	-	RNP 1
STAR ULINA 2Q											
Serial Number	Path Descriptor	Waypoint Identifier	Fly - Over	Course °M (°T)	Magnetic Variation	Distance (NM)	Turn direction	Altitude (ft/FL)	MAX IAS (kt)	VPA/TCH (°/ft)	Navigation Accuracy (NM)
10	IF	ULINA	-	-	-	-	-	+FL170		-	RNP 1
20	TF	DERBU	-	038 (042.8)	+5.0	24.7	-	+8000	-250	-	RNP 1

**Aeronautical Data Tabulation: RNP STAR RWY19**

WAYPOINT LIST		
Waypoint / Fix	Latitude	Longitude
LOXUS	30°13'00.900"N	035°26'00.700"E
LADKO	30°01'01.607"N	035°14'37.440"E
TAMIM	29°36'40.000"N	035°48'40.000"E
ELETA	29°32'00.800"N	035°29'00.100"E
DERBU	29°43'01.646"N	035°17'34.251"E
ULINA	29°24'51.000"N	034°58'17.000"E